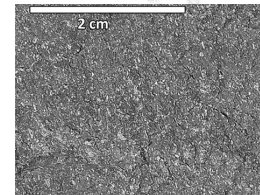


# SIMPLIFIED IGNEOUS ROCK

## IDENTIFICATION

FINE-GRAINED  
ROCKS ARE FORMED  
AFTER A VOLCANIC  
ERUPTION



**FINE-GRAINED**  
rock has no crystals  
visible to the naked eye

rock has holes  
(vesicles)

rock has  
no holes

dark-colored

light-colored

looks  
glassy

not glassy

looks  
glassy

**pumice**

black

light  
grey

dark  
grey

**scoria**

not  
glassy

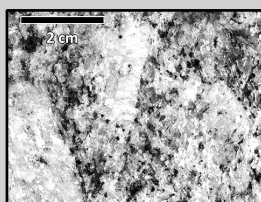
**obsidian**

**andesite**

**basalt**

**andesite**

**basalt**



**COARSE-GRAINED**  
rock has crystals  
visible to the naked eye

dark-colored  
fresh rock  
surface

light-colored  
fresh rock  
surface

**gabbro**

**granite**

COARSE-GRAINED  
ROCKS ARE FORMED  
IN A SLOWLY COOLED  
MAGMA CHAMBER  
MILES BENEATH  
EARTH'S SURFACE

Use this gradient to determine a rock's color

