

Directions To Make Chromatophore Layer Patterns!

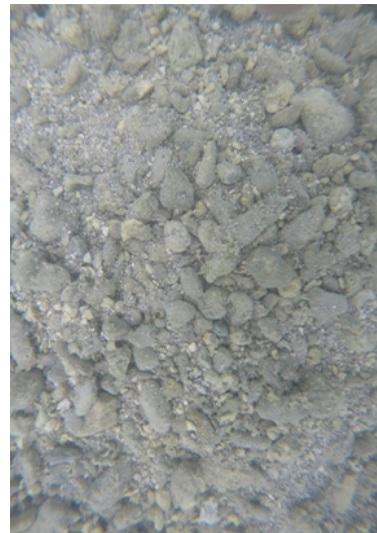
Step 1

Place the template sheet into the sheet protector. Use the Sharpie pens to draw chromatophore patterns. Draw 3 Uniform patterns, 3 Mottled patterns, and 3 Disruptive patterns. You can look at pictures of the camouflaged cuttlefish above for ideas. One student's examples are pictured to the left.

After you complete your chromatophore patterns, then please answer the questions on Student Handout for Activity 2.

Step 2

Look at your Undersea Background. Answer Questions 1 and 2 on Student Handout 2.



CEPHALPOD SKIN:
Chromatophore Layer Pattern Handout 2

ANSWER THESE QUESTIONS <i>BEFORE</i> YOU BEGIN DRAWING YOUR CHROMATOPHORE LAYER:	
1) Describe your Undersea Background. What sorts of things do you recognize in your background? What sorts of shapes do you see? Are the shapes big or small? What sorts of colors do you see?	
2) Make a claim about what type of chromatophore layer patterning (Uniform, Mottled, or Disruptive) and color choices (red, yellow, and/or brown) would be most effective in camouflaging with your background. Additionally, you may make a claim that your chromatophore layer patterning would be ineffective in camouflaging with your background. Support your claim with reasons drawn from your observations of your Undersea Background.	
CLAIM:	
REASONS:	

Step 3



OPTIONAL: Using a white post-it or a square piece of white paper, experiment with where you will place your cephalopod outline on the undersea background. Then, using the watercolor pens, experiment with the patterns and colors that you will use.

Note: Watercolor pens are used to prevent accidentally marking the background; however, they still may bleed through if you are not careful!

Step 4

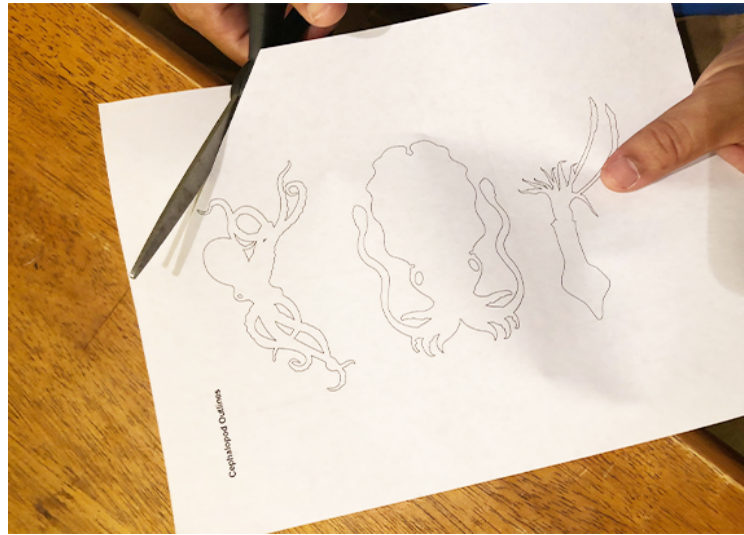


Cut the sheet protector at the right and bottom edges, so that it can open and close like a folder.

Step 5

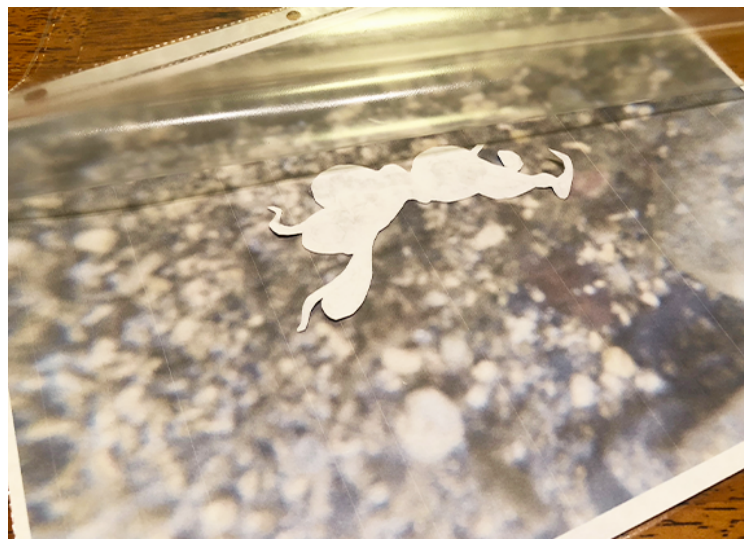


Place the background you are working on into the sheet protector folder, and tape it in place.



Step 6

Select a Cephalopod Outline. Carefully cut out your chosen Cephalopod Outline.



Step 7

Using the glue stick, paste your cut-out onto a selected region of your Undersea Background. Close the sheet protector folder over the background.



Step 8

Consider your background, and where you placed your cephalopod. Look at the Chromatophore Patterns that you created in the previous activity, and decide on the type of patterning (uniform, mottled, disruptive) and coloring (red, yellow, brown) that you will use. Draw your chromatophore pattern onto the sheet protector overlying your Cephalopod cut-out with the Sharpie pens.