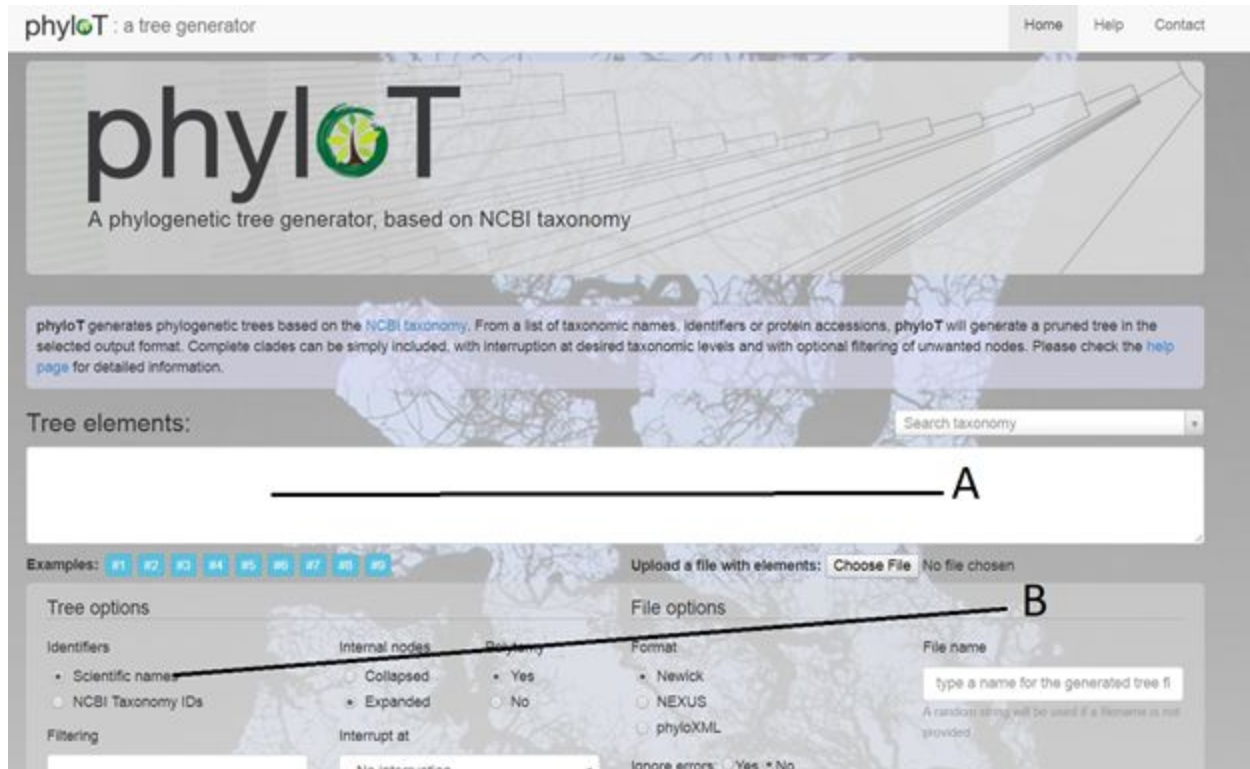


Making Phylogenetic Trees

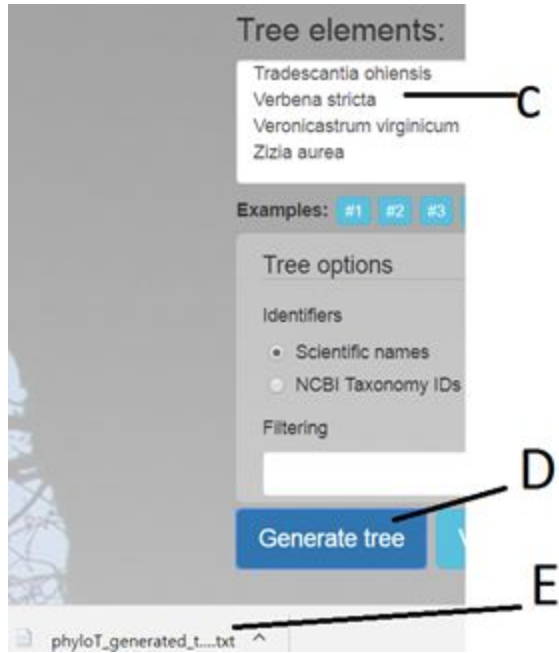
Image Credit: via [PhyloT](#)

Go to the website PhyloT in order to get your species configured into the correct code for the second program which makes your trees. All genetic data is harvested from NCBI.

<http://phylo.t.biobyte.de/>

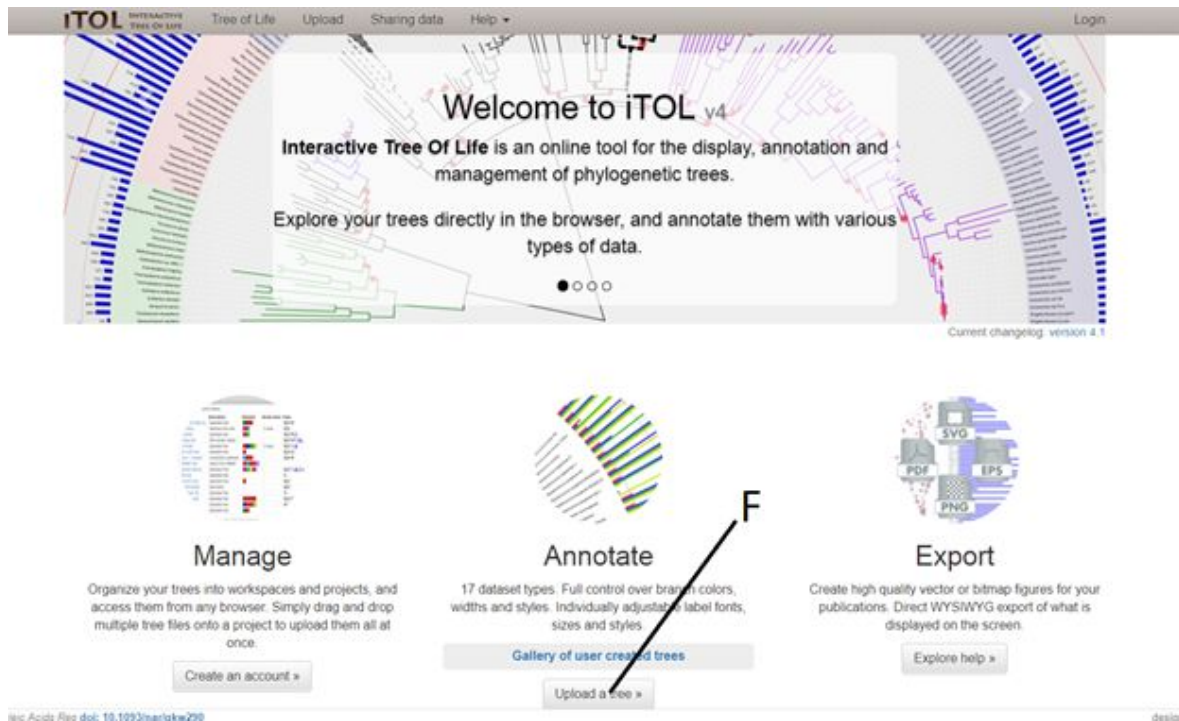


1. When you first visit the website you will see this
2. Enter names of species in the box that says Tree elements: (A)
 - Make sure that you enter names in the correct Scientific Naming format Genus (capital first letter) Species (all lower case).
 - You must also make sure that you use commas between names or a new line
 - Make sure that Scientific names is clicked for the search (B)
3. Once you have entered the Scientific Names you can roll down to the bottom of the web page



4. You can now click on the Generate tree button (D)
5. It will download a txt file for you (E)
6. You can drag this file over to the next website or open it and copy and paste its contents
7. Visit the Interactive Tree of Life website <https://itol.embl.de/>

It should look like this



8. Click on the Upload a tree button (F)

- When you get to this window you have a couple options that you can pursue to get your data into the program

Upload a new tree

Use this page to upload and visualize a new phylogenetic tree. It should be in a plain text file and in a supported format (Newick, Nexus or PhyloXML). You can also use .jplace files generated by RaxML or pplacer, or .qza trees generated by QIIME 2. Please check the [help pages](#) for detailed instructions.

Trees uploaded anonymously will be stored for 30 days, and are not protected from modifications by other users. If you want to keep them private and protected, or have multiple trees to visualize, we recommend creating an [ITOL personal account](#). If you already have an account, please [login first](#).

Datasets and other annotation should be dragged and dropped directly onto the interactive tree. Please check the [help pages](#) for detailed instructions and dataset template files.

Upload a new tree

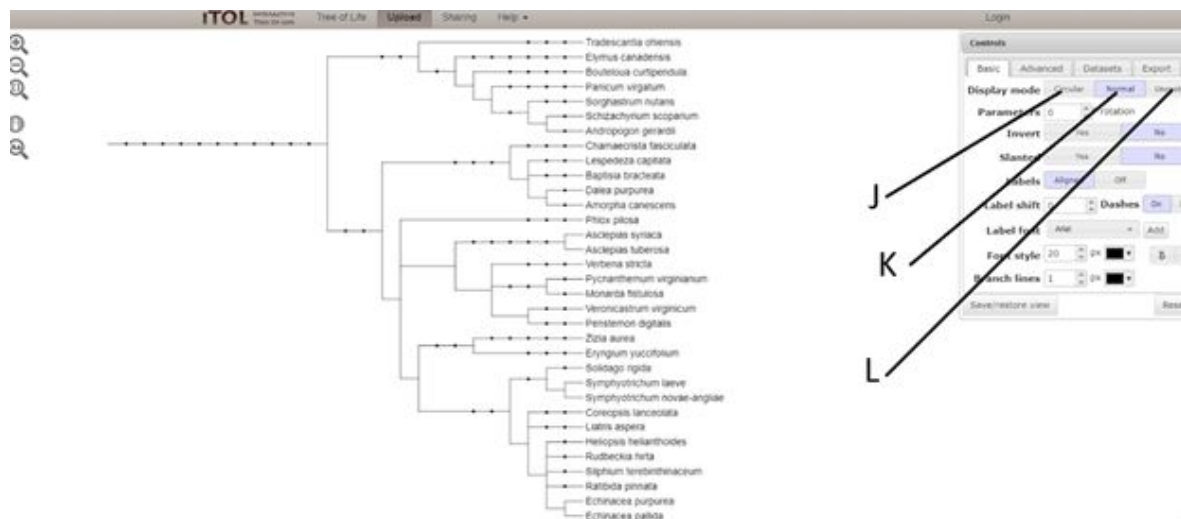
Tree name:

Paste your tree into the box below, or select a file using the **Tree file** selector. You can also simply drag and drop the tree file onto the page (only a regular plain text file, not QIIME QZA files).

Tree text:

Tree file:
 None has been chosen

- You can drag and drop your txt file into Tree text window (G). You can copy and paste your txt file into Tree text window (G). Or if you saved your txt file you can choose file (H) and upload it (I)
- Once you enter your data it will automatically generate your tree for you.



- You can zoom in and out of your tree, change it from normal (K) to Circular (J) or Unrooted (L)