

## Printing Instructions

There are two blank cards on page six that you can design yourself for additional challenges.

The cards are formatted for letter size paper (8.5" x 11") and the Avery 8387 postcard template.

The cards are on pages 3-6 of this file.

For a standard letter size, we recommend selecting the 'Two-sided' printing function and print pages 3-6.

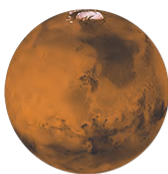
If using the Avery 8387 template, please use the instructions given in the package.



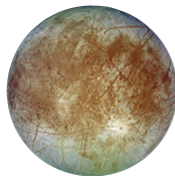
## Image Attributions

Challenge Card illustration created by Gica Tam

All other images from NASA



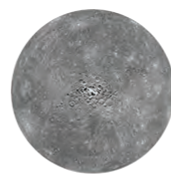
**Mars**



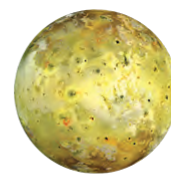
**Europa**



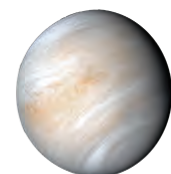
**Titan**



**Mercury**



**Io**

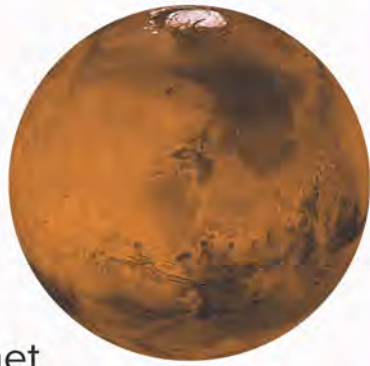


**Venus**

**Page  
Intentionally  
Blank**



# Mars



## Type

Terrestrial planet

## Temperature Range

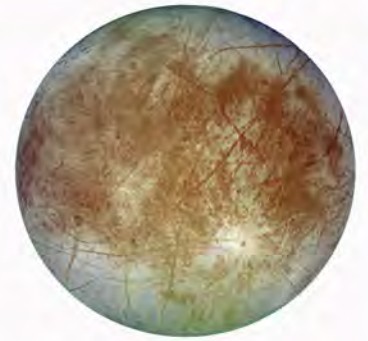
-284° to 86° Fahrenheit  
(-140° to 30° Celcius)

## Surface Conditions

- Wide canyons
- Large volcano
- Windy and dusty
- No liquid

# Europa

*moon of Jupiter*



## Type

Icy moon

## Temperature Range

-370° to -210° Fahrenheit  
(-223° to -134° Celcius)

## Surface Conditions

- Water-ice surface
- Large cracks in icy surfaces
- Pits and domes

# Titan

*moon of Saturn*



## Type

Icy moon

## Temperature Range

-298° to -292° Fahrenheit  
(-176° to -180° Celcius)

## Surface Conditions

- Ice rocks
- Sculpted by liquid natural gas
- Rivers, lakes, and seas
- Sandy dunes

# Mercury



## Type

Terrestrial planet

## Temperature Range

-290° to +800° Fahrenheit  
(-180° to +427° Celcius)

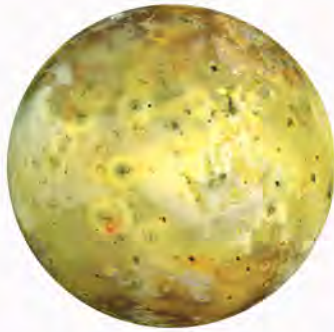
## Surface Conditions

- Deep craters
- Towering cliffs
- Areas of smooth surfaces
- Possible water ice at poles



# Io

*moon of Jupiter*



## Type

Rocky moon

## Average Temperature

-202° Fahrenheit

(-130° Celcius)

## Surface Conditions

- Intense volcanic activity
- Lakes of lava
- Ground bulges up and down
- No liquid water
- Sulfur-dioxide “snow”

# Venus



## Type

Terrestrial planet

## Average Temperature

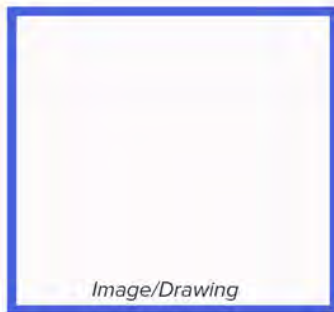
900° Fahrenheit

(465° Celcius)

## Surface Conditions

- Cloudy
- Volcanoes and valleys
- Numerous craters
- Dusty

## Name



*Image/Drawing*

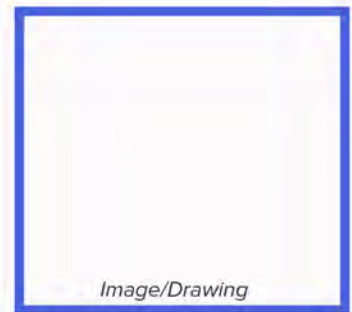
## Type

## Temperature Range

## Surface Conditions

- 
- 
- 
- 

## Name



*Image/Drawing*

## Type

## Temperature Range

## Surface Conditions

- 
- 
- 
-